

4500 Series

CONFIGURATION SOFTWARE

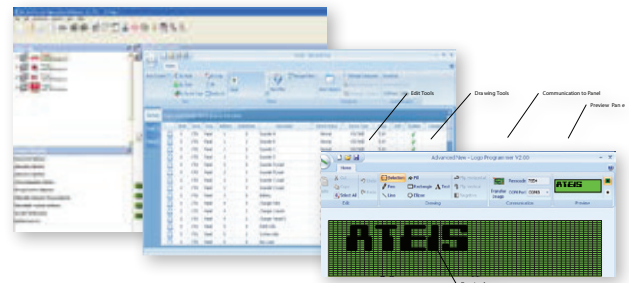


Features

- 'Cause and effect' programming
- Auto and pre-configured software options
- Remote dial-up via modem
- User-friendly graphical interface
- User-defined logos for the fire panel
- Full configuration of single panel or network system
- Automatic design check of site configuration
- Assistants menu helps the engineer to easily configure panels
- Import, export information and print configuration reports
- Extract device information and event logs from single or multiple panels
- Device History including last activation, test, enable, disable and date created
- User defined filters allow data to be grouped and searched in many different ways
- View device status, analogue values and drift (contaminated) information
- Network simulation and test feature
- Categorise events and create User defined reports
- Allows the installer's logo to be displayed on the panels graphical LCD display during Normal Operation
- Uploads standard bitmap images
- Tool allows creation of logos
- JPG and GIF images can be imported

Application

Configuration Software comprises a range of specific tools allowing users to achieve what they want quickly and easily, not get bogged down in large, clumsy and complicated software.



Configuration Software is being continually developed for the VELOX panel range, adding new features and performance enhancements. Recently these have included comprehensive false alarm management and alarm verification features.

Our position in the global fire industry means we help guide legislation and can implement software changes quickly, keeping our customer systems right up to date. We also listen closely to our customers and often produce features for specific client requirements.

The 4500 and 4501 configuration software for VELOX 4000 panels is compatible with Windows operating systems and offers sophisticated 'cause and effect' programming functionalities. The 4502 remote dial-up software allows communication with the 4000 series of fire alarm control panel via a modem or direct RS232 connection.

The 4503, 4504, 4505 graphical control software is used to setup a user friendly interface to control fire alarm equipment by means of graphical maps, images, and text for monitoring installation sites and program graphical command buttons for enabling or disabling devices.

Technical Specifications

PC Specification (Minimum Requirement) - Not Supplied

Item	Specification Details
Processor	Intel Pentium 4 Processor, 1.8 GHz or higher (32 bit processing only - 64 bit not supported)
Recommended Operating Systems	Windows XP Professional SP3 / Windows Vista Ultimate ('Home' package variants can be used if network connectivity is not required)
Memory	512 MB RAM (Minimum Recommended)
Disk Space	40Gb Hard Drive (Minimum Recommended)
Graphics	XGA Graphics Accelerator supporting a minimum 1024 x 768 resolution
Sound Card	Windows compatible sound card & speakers / On-board sounder required forevent notification
Monitor	Monitor (minimum 17" and support a screen resolution of 1024 x 768
Pointing Device	A Mouse or Touch-Screen Monitor is essential
Keyboard	Required
Parallel Port	Required if using a parallel port software dongle – Confirm at time order is placed for software
USB Port	Required if using a USB port software dongle – Confirm at time order is placed for software
Printer	Optional
Serial Port	1 x Serial port for communications with Graphics Interface. (Additional serial ports may be necessary if connectivity to other services are required)
CD ROM Drive	Required for software installation
Backup Device	Backup device recommended (e.g. CDR, USB, ZIP disk)
Warranty	A PC with on-site warranty support is recommended
Options	<p>Touch-Screen Monitor (Minimum Specification suggested):</p> <ul style="list-style-type: none"> • 17" supporting a screen resolution of at least 1024 x 768) • Any resolution above 1024 x 768 can be supported however, Graphical bitmaps must be created in the appropriate format for the resolution selected. • If monitors are to be used in a Portrait manner a horizontal screen resolution of at least 950 pixels must be available. • 1 x Additional Serial / USB port for communications with Touch Screen Controller.

Order Codes

Part No.	Description
4500	Configuration software & lead
4501	Configuration software & USB upload/download lead
4502	Remote dial-up software (virtual panel)
4503	Graphical control software (single panel, compact version)
4504	Graphical control software (up to 10 node connection)
4505	Graphical control software (up to 99 node connection)
4506	Logo programming software