

## VELOX VCS-AB-FD-EN

Ceiling Speaker for AB-Cabling ,  
2x6 watts, RAL 9016, metal,  
with thermal fuse, ceramic  
block,certified EN 54-24, BS 5839  
compliant, IP21C, with Fire Dome



### Description

The VCS-AB-FD-EN is designed with two independent speakers and 100V transformers to enable an economic operation of two separated speaker lines (A/B-lines) for highest security demands. In case of a failure of one speaker line the redundancy of the speakers and the transformers will guarantee unimpaired function. The speaker is also compliant with the British Standard BS 5839, Part 8.

The 2x6W powered speaker is equipped with two full-range loudspeakers and two 100V transformer with 3 power adjustments, each. The powder coated metal similar in RAL 9010 guarantees long-term stability. For additional safety a 2-pin ceramic connector block, thermal fuses are provided and the speaker chassis are impregnated against dampness. Protection class IP 55 secures the speaker against the impact of environmental influences.

Quick and easy mounting with spring clamps and short tension distance. The connecting cables can be supplied by 4 rubber grommets in the firedome. Special paint of the speaker in 4-digit RAL- or NCS- colour available at extra cost. The firedome is included in the delivery.

This speaker is suitable for a ceiling strength of about 10-45 mm. Our specification is primarily related to solid ceilings, for ceilings with soft materials a higher ceiling thicknesses could be necessary. In addition, stronger cables and other fittings may also result in changes of the appropriate setup. With regard to the variety of materials and manufacturers, we recommend to build in a sample of the speaker to match the requirements accurately.

- Quick mounting
- Highest reliability
- BS 5839

### Standard & Approvals

VELOX loudspeakers are tested and classified according to the IEC standard 60529 (degree of protection by enclosure) against the penetration of foreign objects and moisture.

The classification is conforming to standards through characterization with a fixed code. This code consists of the letters IP (International Protection) followed by two digits.

The first digit indicates the degree of protection against dust and the second digit the degree of protection against water. Please note that the testing of the products has been carried out in laboratory conditions which are not always 100% comparable with the conditions of different installation environments. This protection can be reduced due to normal wear and tear depending on the installation environment.

RoHS compliant (2011/65/EU)

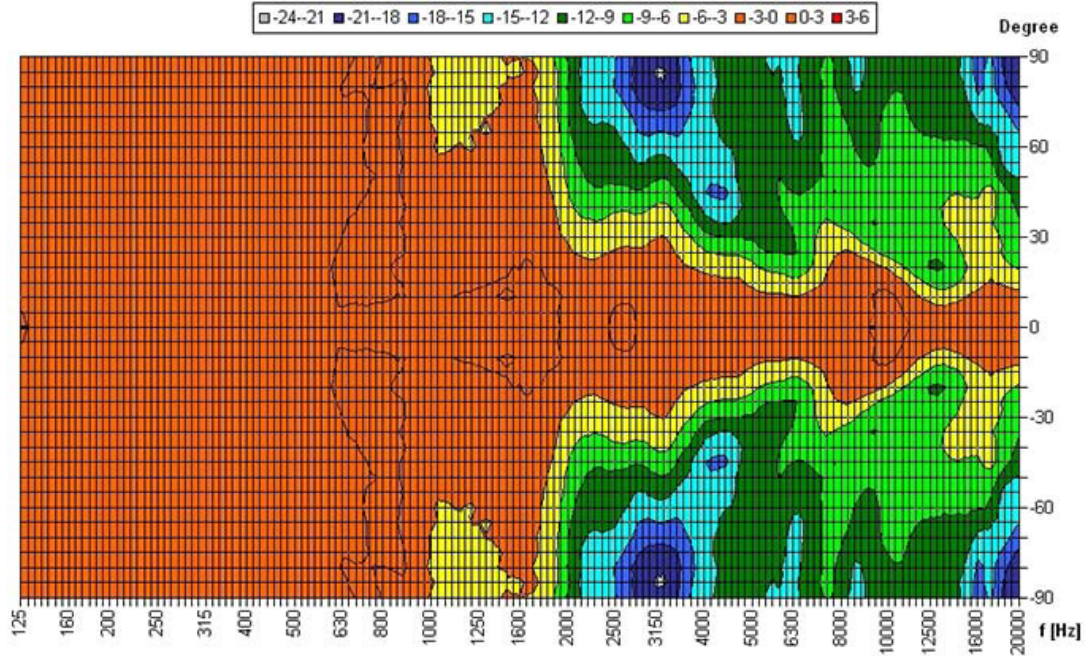
The IP rating specified is based on VELOX test results, not on CNBOP-PIB test results. Certification only verifies the minimum requirements for EN54-24 compliance.



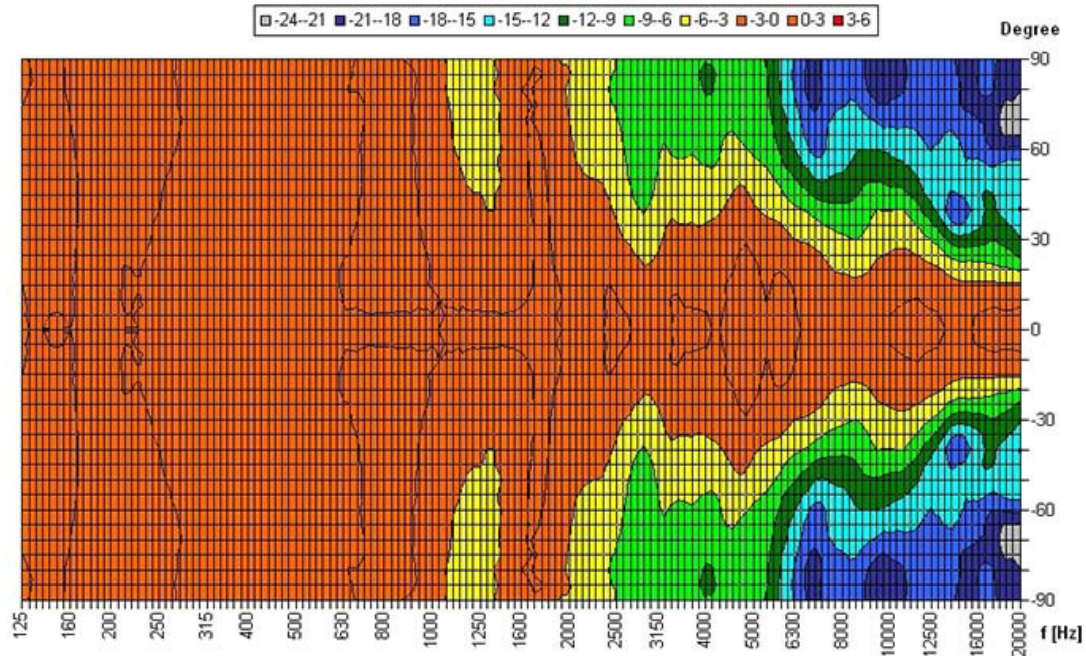
EN 54-24:2008  
Ref. Nr.: 006-13  
ID-Code: SAA-LS06  
xxxx-CPR-xxxx

Polar Diagrams

Horizontal Isobars single



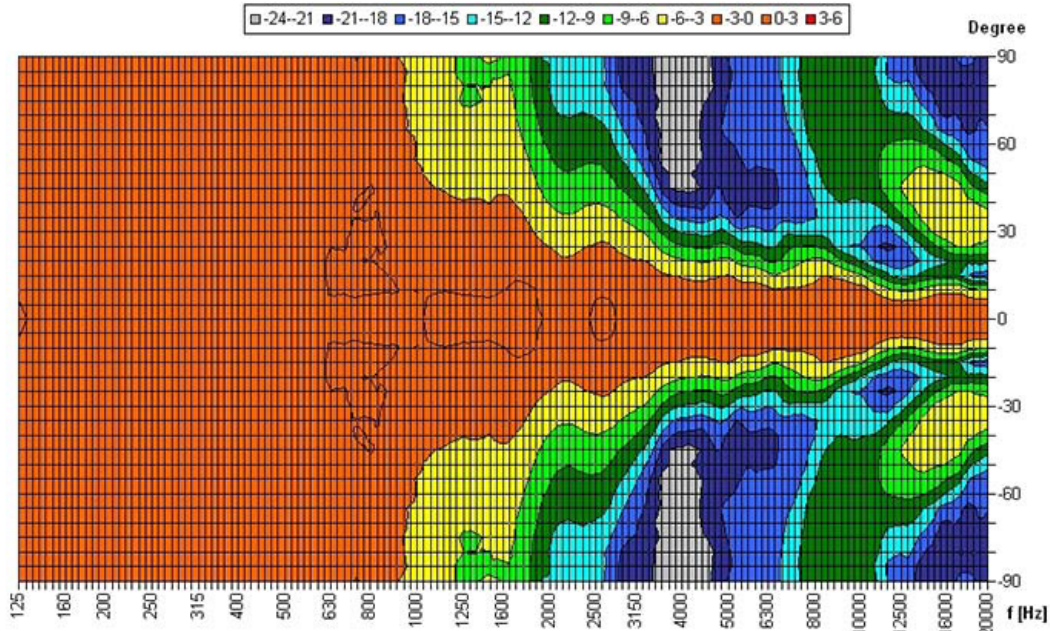
Vertical Isobars single





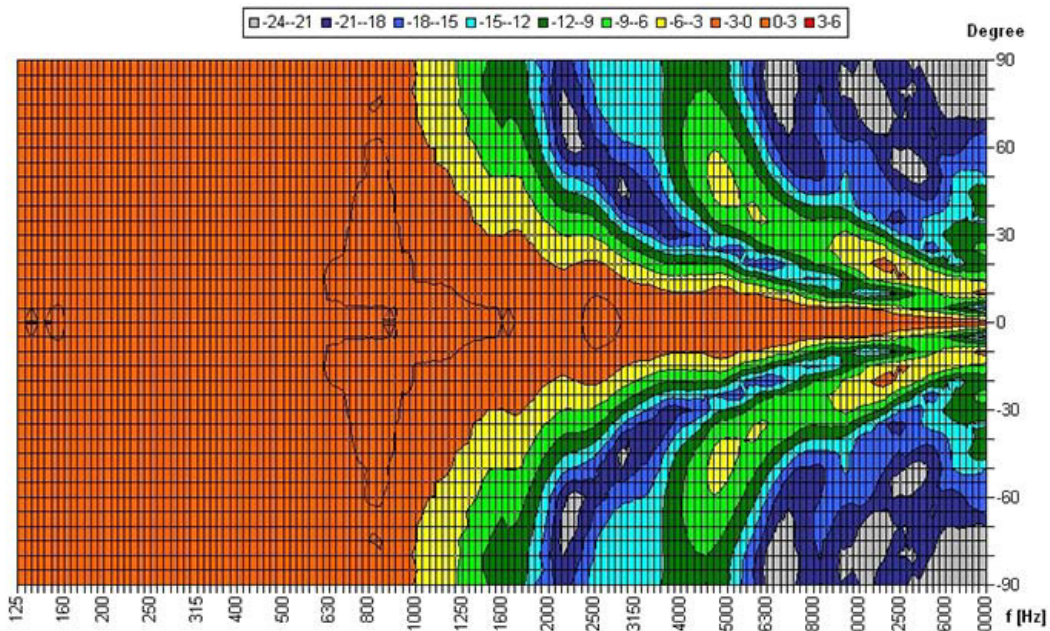
Polar Diagrams

Horizontal Isobars double



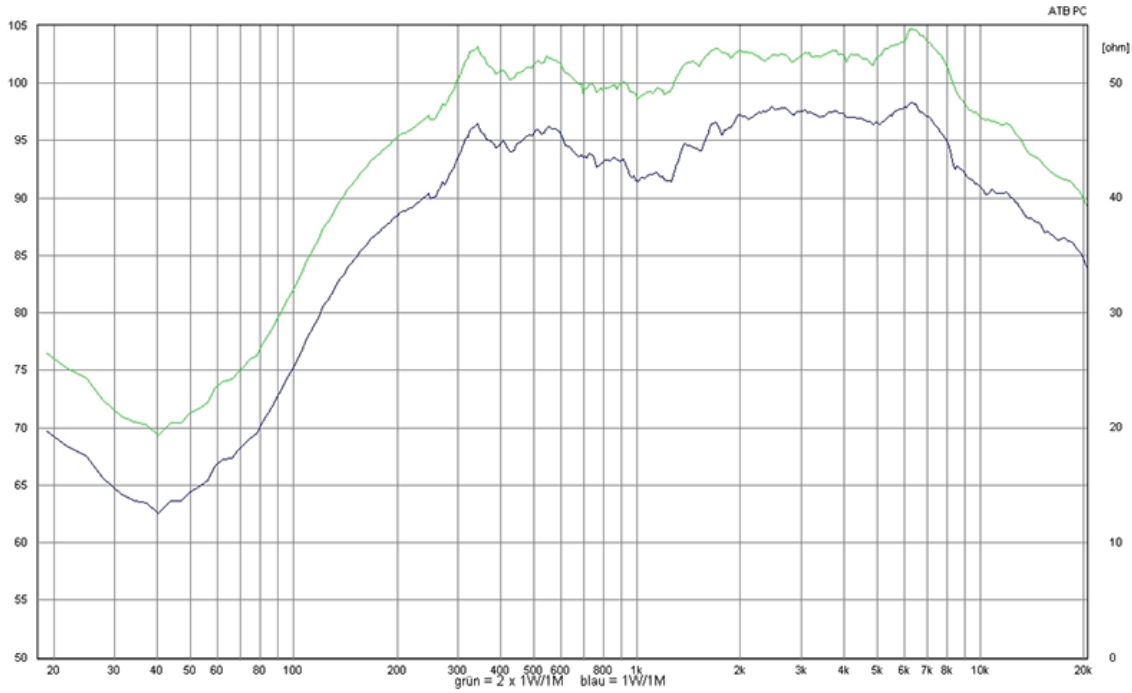
Parameters: Cyclic Move: 0° ; Symmetry: 0..+180 sym ; Freq.Smooth: 1/3 Oct ; Ang.Resol.: 5° ; Rel. to: 0° Axis 0°

Vertical Isobars double

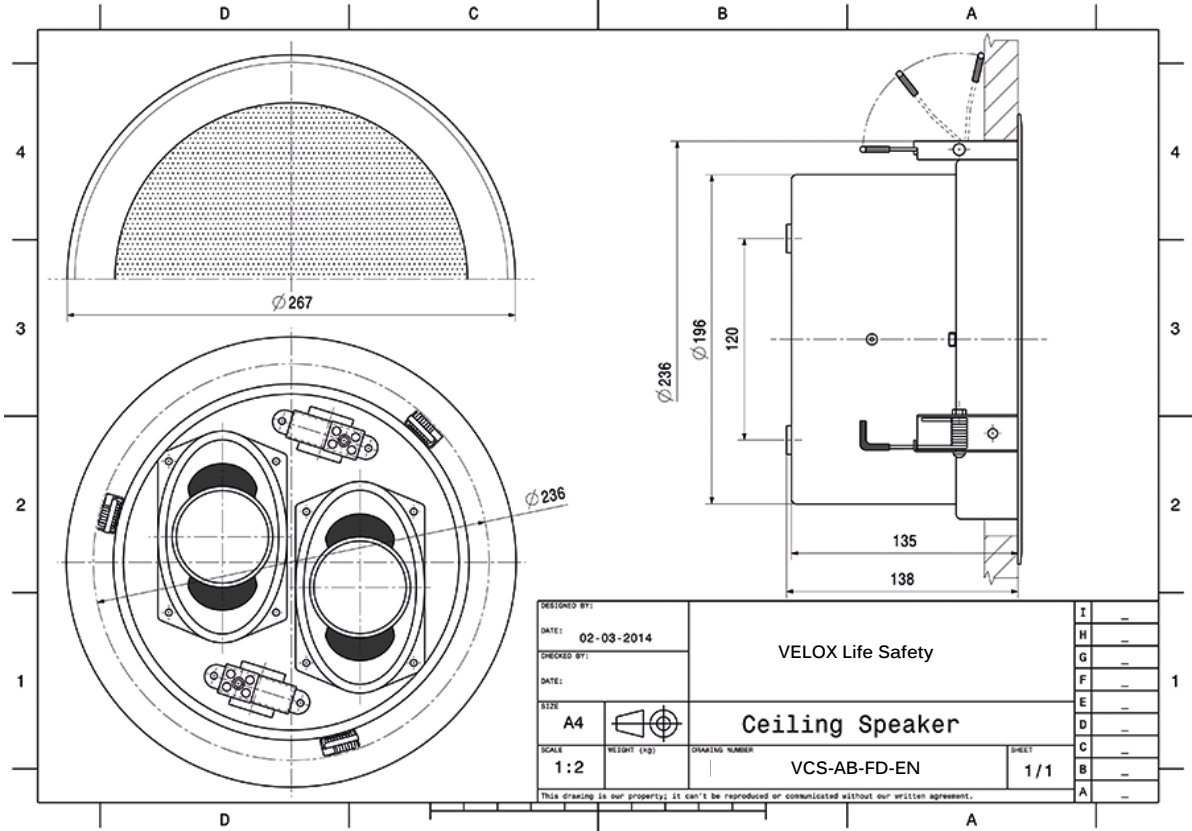


Parameters: Cyclic Move: 0° ; Symmetry: 0..+180 sym ; Freq.Smooth: 1/3 Oct ; Ang.Resol.: 5° ; Rel. to: 0° Axis 0°

Frequency Response Diagrams



Technical Diagrams



**Technical Data (Electrical)**

Feature	Description
Power	2x6/3/1,5 W
Impedance (100V)	2 x 1667/3333/6667 ohm
Frequency Range	162 - 18.600 Hz (single) 159 - 16.000 Hz (double)
Frequency Response	125 - 23.500 Hz (single) 120 - 23.500 Hz(double)
SPL IEC268-5 , 1W/1m	<b>89,0 dB</b>
SPL EN54-24, Pmax/4m	85,0 dB (single) 91,0 dB (double)
Sensitivity EN54-24, 1W/4m	<b>77,0 dB</b>
Sensitivity EN54-24, 1W/1m	<b>89,0 dB</b>
Dispersion -6dB, 500Hz	180° (h) s/d 180° (v) s/d
Dispersion -6dB, 1KHz	160° (h) s/d 160° (v) s/d
Dispersion -6dB, 2KHz	120° (h) 160° (v) single 75° (h) 90° (v) double
Dispersion -6dB, 4KHz	65° (h) 120° (v) single 40° (h) 60° (v) double

**Technical Data (Mechanical)**

Feature	Description
Dimensions	268x136 mm
IP Rating	IP55
Weight (net)	2,16 kg
Ceiling Cut-out	243 mm
Built-in depth	135 mm
Temperature range	-10 / +55 C°
Mounting	Snap system
Connector	2-pin ceramic block
Terminal diameter	<b>3,2 mm</b>
Maximum cable cross section	<b>8mm<sup>2</sup> (single)</b>
Colour	RAL 9010

Part No.	Description
VCS-AB-FD-EN	Ceiling Speaker for AB-Cabling , 2x6 watts, RAL 9016, metal, with thermal fuse, ceramic block,certified EN 54-24, BS 5839 compliant, IP21C, with Fire Dome

As our policy is one of constant product improvement the right is therefore reserved to modify product specifications without prior notice  
Ref. VCS-AB-FD-EN/SP/R1/V1/280223

**ATEIS Middle East FZCO.**

LIU No.11 Dubai Silicon Oasis  
P.O. Box 293640 Dubai United Arab Emirates.  
Tel. +971 (4) 3262730 - Fax. +971 (4) 3262731  
info@ateis.ae, www.ateis.ae, www.velox.ae