

## VELOX VCS500-15-EN

5" 15W Bassreflex-ceiling speaker,  
2-Way System



### Description

The 15W powered speaker is equipped with a 130mm 2-way bassreflex system with neodymium tweeter and a 100V transformer with 4 power adjustments. Low impedance operation is also possible. The impactresistant ABS housing in RAL 9016 guarantees long-term stability. For additional reliability, a thermal fuse and a strain relief fitting are provided.

The speaker is also secured with protection class IP 21C against the security risks of environmental influence and the speaker chassis is impregnated against wetness. The easy installation will be done by using the screw mounting system.

Perfectly suitable for installations where high sound quality is needed.

- bassreflex
- quick mounting
- impact-resistant ABS



Made for VELOX in Germany

### Standard & Approvals

VELOX loudspeakers are tested and classified according to the IEC standard 60529 (degree of protection by enclosure) against the penetration of foreign objects and moisture.

The classification is conforming to standards through characterization with a fixed code. This code consists of the letters IP (International Protection) followed by two digits.

The first digit indicates the degree of protection against dust and the second digit the degree of protection against water. Please note that the testing of the products has been carried out in laboratory conditions which are not always 100% comparable with the conditions of different installation environments. This protection can be reduced due to normal wear and tear depending on the installation environment.

RoHS compliant (2011/65/EU)

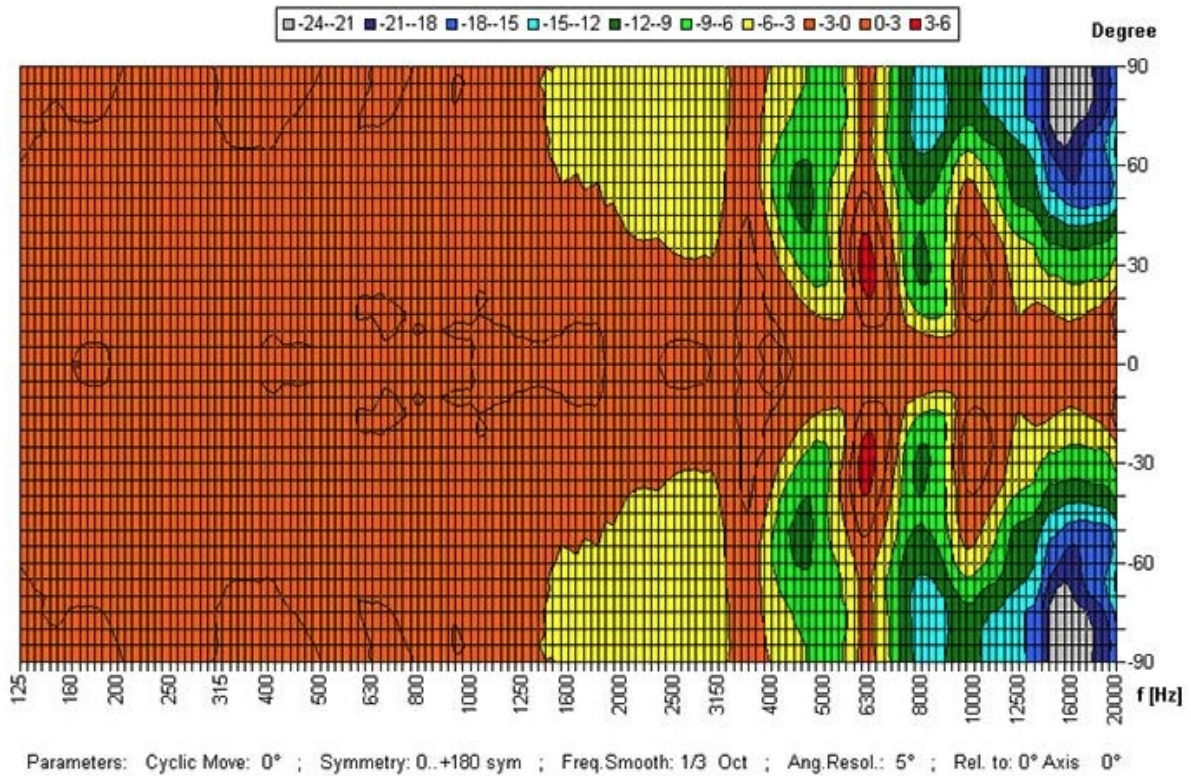
The IP rating specified is based on VELOX test results, not on CNBOP-PIB test results. Certification only verifies the minimum requirements for EN54-24 compliance.



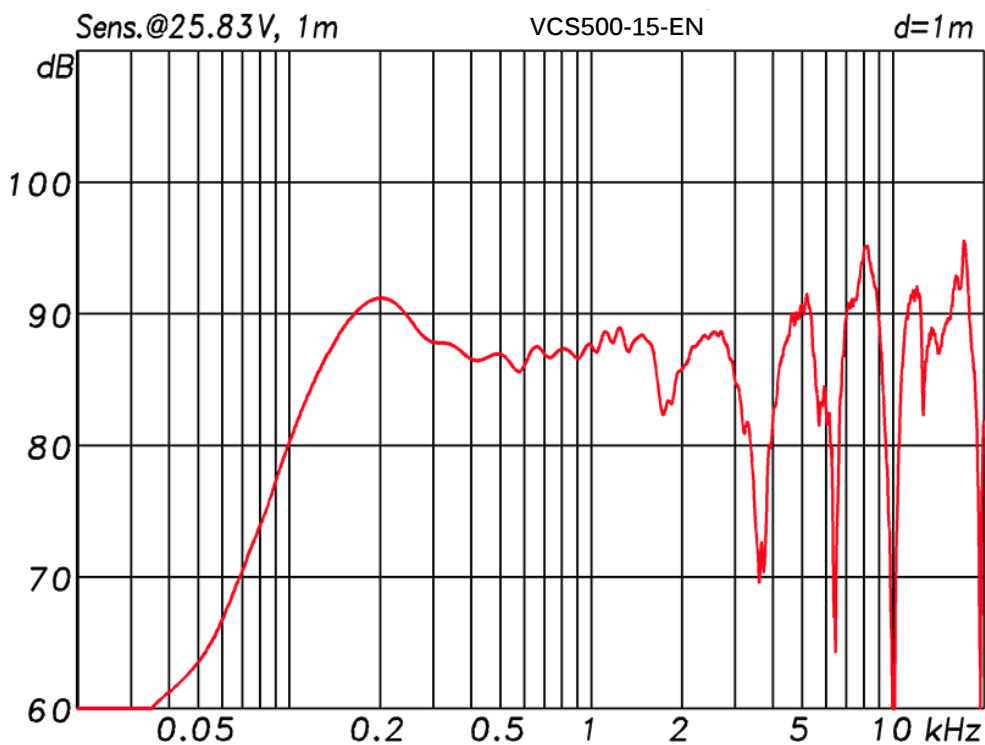
EN 54-24:2008  
Ref. Nr.: 006-14  
ID-Code: SAA-LS15  
xxx-CPR-xxxx

Polar Diagrams

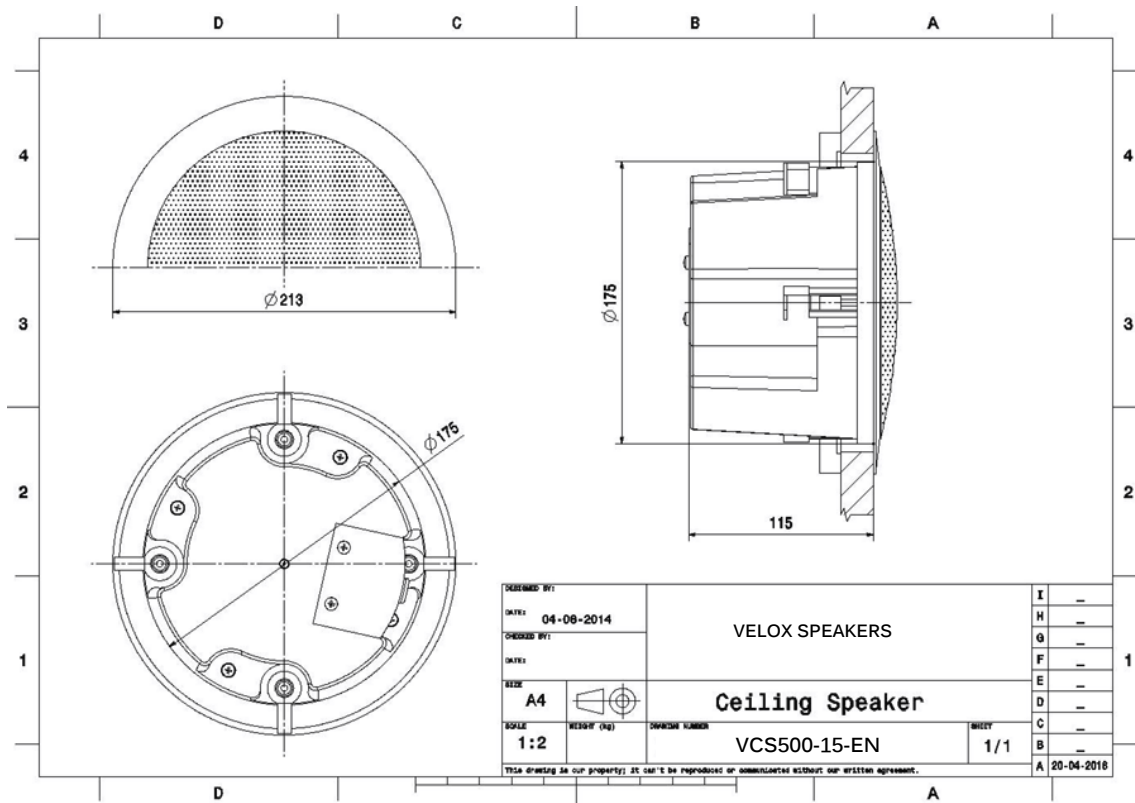
Horizontal Isobars



Frequency Response Diagrams



## Technical Diagrams



## Technical Data (Electrical)

Feature	Description
Power	15 / 7,5 / 3,75 / 1,9 (8) W
Impedance (100V)	667/1333/2667/5263 ohm
Frequency Range	100 - 22.800 Hz
Frequency Response	87 - 23.600 Hz
SPL 1W/1m, peak	92,9 dB
SPL , 1W/4m, peak	80,9 dB
SPL Pmax/4m, peak	92,9 dB
SPL, rated noise power / 4m	92,6 dB
Sensitivity EN54-24, 1W/4m	74,2 dB
Sensitivity EN54-24, 1W/1m	86,2 dB
Dispersion -6dB, 500Hz	h/v 180°
Dispersion -6dB, 1KHz	h/v 180°
Dispersion -6dB, 2KHz	h/v 145°
Dispersion -6dB, 4KHz	h/v 95°

**Technical Data (Mechanical)**

Feature	Description
Dimensions	213,5 x 152 mm
IP Rating	IP21
Weight (net)	1,73 kg
Ceiling Cut-out	178 mm
Temperature range	-10 / +55 C°
Mounting	Quick-mount clamps
Connector	4-pin screw terminal
Maximum cable cross section	4,9mm <sup>2</sup>
Max. cable cross section loop	2x4,9mm <sup>2</sup>
Colour	RAL 9016

Part No.	Description
VCS500-15-EN	5" 15W Bassreflex-ceiling speaker, 2-way-system, 15 watts (100V & 8ohms), RAL 9016, ABS, with thermal fuse, certified EN 54-24, IP21C,