

VELOX VWS-6-M-EN

6W Wall Mount Speaker, Metal, Thermal Fuse, Certified EN54-24



Description

This speaker is the best choice for sensitive installations like in prisons or industrial projects where plastic and wooden materials cannot be used. The 6W powered speaker is equipped with a 165mm full-range loudspeaker chassis and a 100V transformer with 3 power adjustments. The extremely stable metal housing in RAL 9010 with corrosion-resistant powder coating, offers tremendous resilience in unobtrusive design. For additional reliability, a 2 pin-ceramic block, a thermal fuse is provided and the speaker chassis is impregnated against wetness.

The speaker is also secured with protection class IP 21C against the risks of environmental influences. The speaker is also compliant with the British Standard BS 5839, Part 8. Quick and easy mounting with screws.

- All-metal construction
- Vandal-proof
- BS 5839



Made for VELOX in Germany



Standard & Approvals

VELOX loudspeakers are tested and classified according to the IEC standard 60529 (degree of protection by enclosure) against the penetration of foreign objects and moisture.

The classification is conforming to standards through characterization with a fixed code. This code consists of the letters IP (International Protection) followed by two digits.

The first digit indicates the degree of protection against dust and the second digit the degree of protection against water. Please note that the testing of the products has been carried out in laboratory conditions which are not always 100% comparable with the conditions of different installation environments. This protection can be reduced due to normal wear and tear depending on the installation environment.

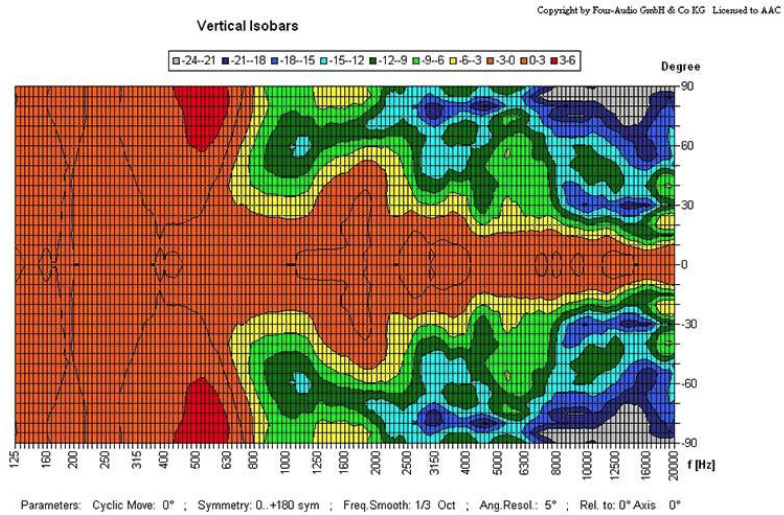
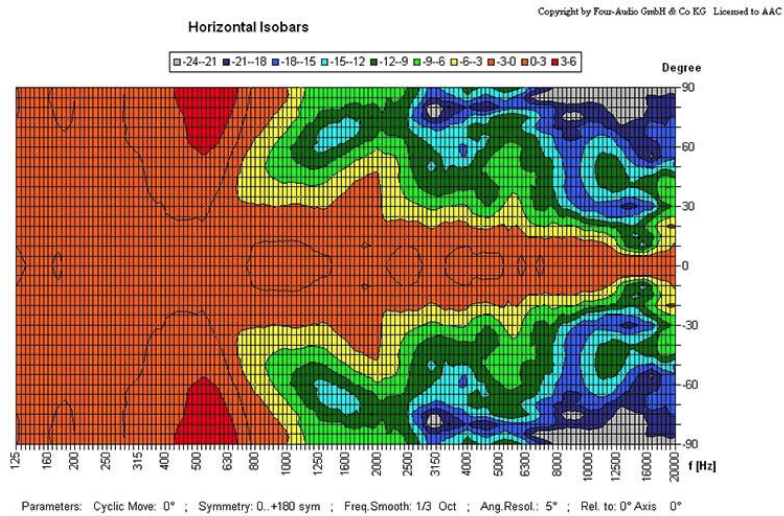
RoHS compliant (2011/65/EU)

The IP rating specified is based on VELOX test results, not on CNBOP-PIB test results. Certification only verifies the minimum requirements for EN54-24 compliance.

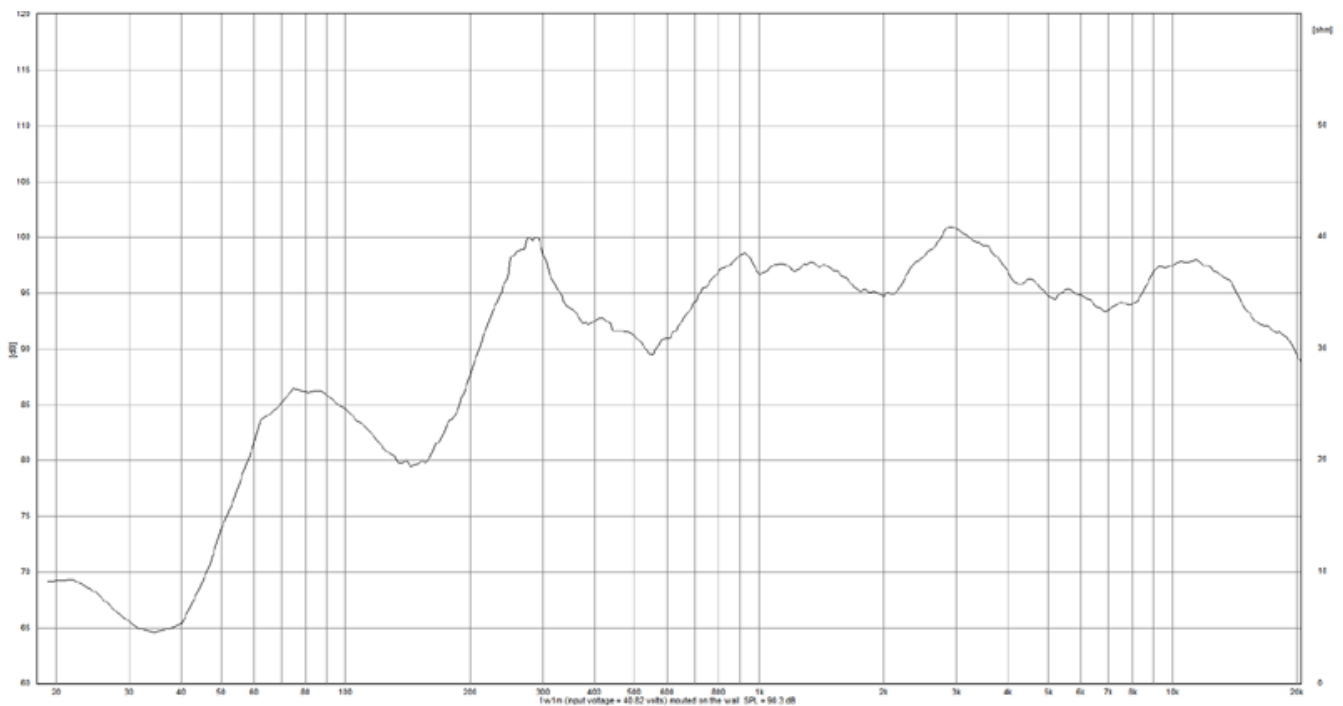


EN 54-24:2008
 Ref. Nr.: 018-15
 ID-Code: SAA-LS18
 xxx-CPR-xxxx

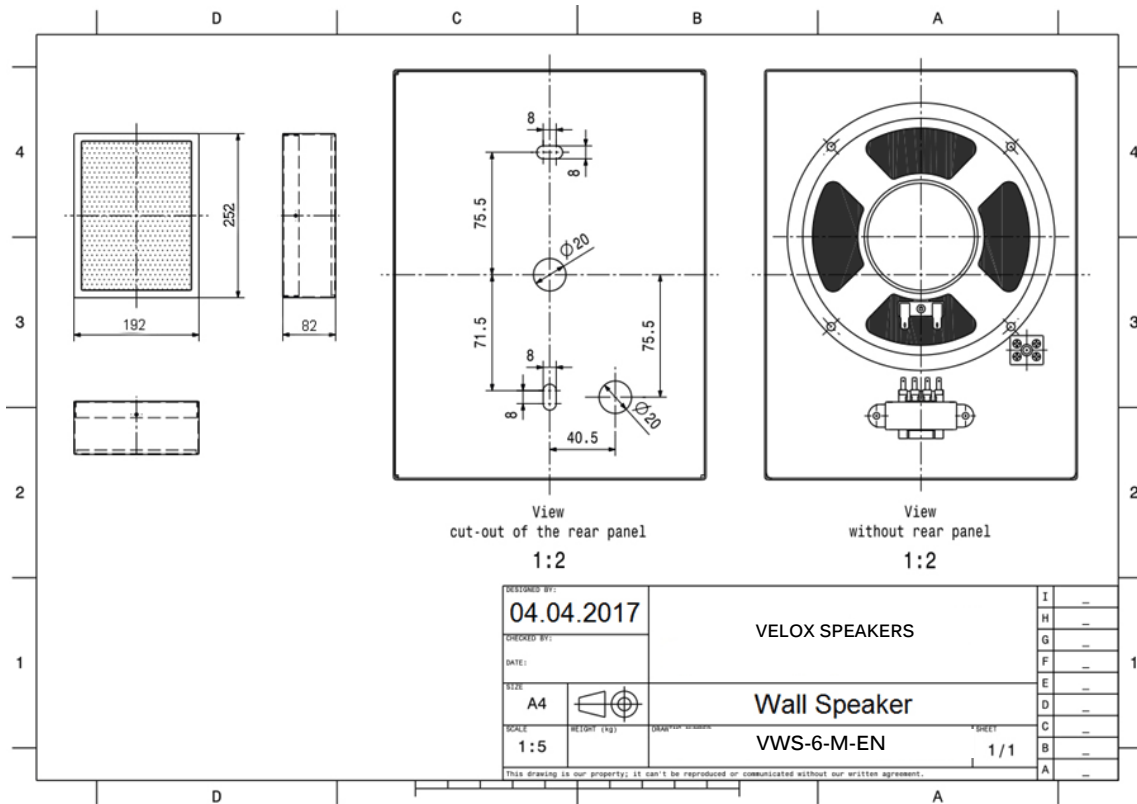
Polar Diagrams



Frequency Response Diagrams



Technical Diagrams



Technical Data (Electrical)

Feature	Description
Power	6/3/1,5 W
Impedance (100V)	1667/3333/6667 ohm
Frequency Range	170 - 18.500 Hz
Frequency Response	70 - 23.500 Hz
SPL 1W/1m, peak	98,3 dB
SPL , 1W/4m, peak	86,3 dB
SPL Pmax/4m, peak	94,0 dB
SPL, rated noise power / 4m	90,0 dB
Sensitivity EN54-24, 1W/4m	82,0 dB
Sensitivity EN54-24, 1W/1m	94,0 dB
Dispersion -6dB, 500Hz	h=180° v=180°
Dispersion -6dB, 1KHz	h=160° v=160°
Dispersion -6dB, 2KHz	h=120° v=120°
Dispersion -6dB, 4KHz	h=76° v=76°

Technical Data (Mechanical)

Feature	Description
Dimensions	252x192x81 mm
IP Rating	IP21
Weight (net)	2,04 kg
Temperature range	-10 / +55 C°
Mounting	Screws
Connector	2-pin ceramic block
Maximum cable cross section	8mm ²
Max. cable cross section loop	2x2mm ²
Colour	RAL 9010

Order code

Part No.	Description
VWS-6-M-EN	6W Wall Mount Speaker, Metal, Thermal Fuse, Certified EN54-24